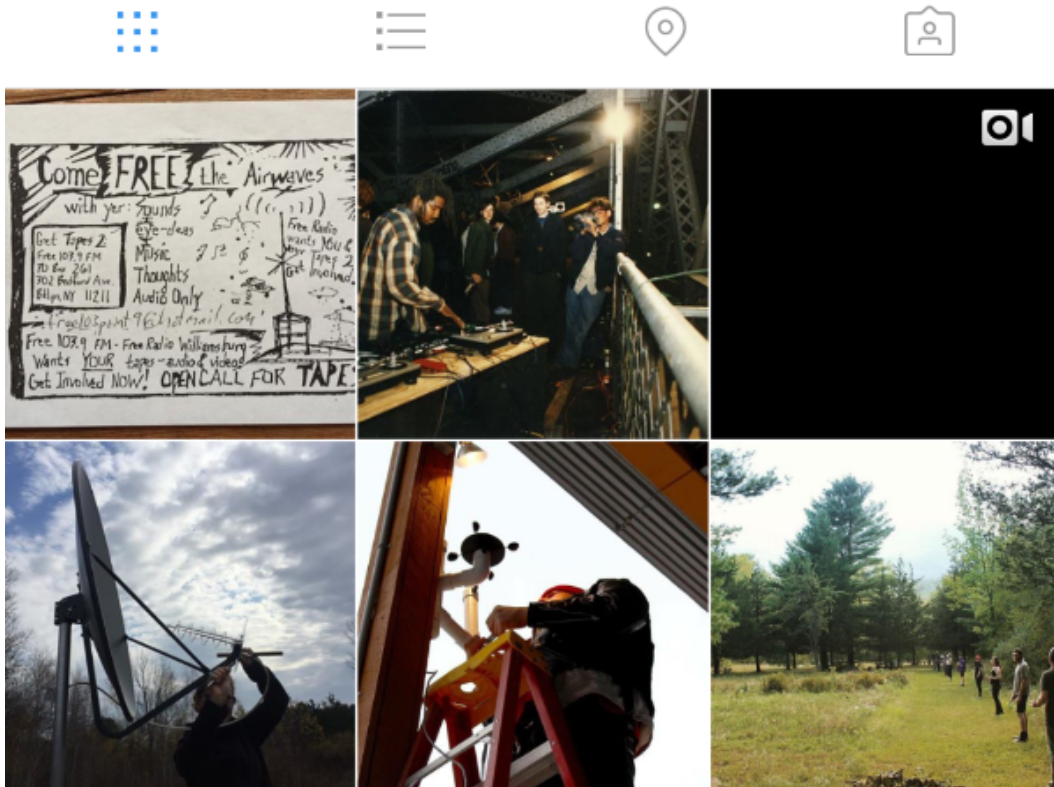


2017 is Wave Farm's 20th Anniversary year. Grant, residencies, and open call deadlines in the coming weeks. Special broadcasts.

[View this email in your browser](#)





Wave Farm 20th Anniversary Project: 365 DAYS ON INSTAGRAM [#WaveFarm20th](https://www.instagram.com/wave_farm)

We're delving deep into our paper and photo archives and posting an image a day throughout our anniversary year. Follow Wave Farm on Instagram [@wave_farm](https://www.instagram.com/wave_farm).



Open Call for Sound Works: SHORT WAVES / LONG DISTANCE

Submission Deadline: January 31, 2017

Wave Farm and The North American Shortwave Association are pleased to announce "Short Waves / Long Distance," an open call for works exploring the sonics of the shortwave radio spectrum (2-30 mHz), and the experience of long-distance listening. The call is in conjunction with the 30th Anniversary of the Winter Shortwave Listener's Fest and Wave Farm's 20th Anniversary, both of which will be celebrated in 2017. Selected works will be featured as part of a one-hour program during **David Goren's Shortwave Shindig** held at the Fest on Friday evening March 3, 2017, and broadcast worldwide on shortwave via **WRMI** (Radio Miami International) and Wave Farm's **WGXC 90.7-FM** in the Upper Hudson Valley, New York. Selected works will also be included in a special program to be produced for the Ràdio WEB MACBA series **INTERRUPTIONS**.

More information at <https://wavefarm.org/calendar/xbccx5>



New York State Council on the Arts in Partnership with Wave Farm: MEDIA ARTS ASSISTANCE FUND (MAAF)

Submission Deadline for Individual Artists: January 15, 2017

NYS media artists may request funding support up to a maximum amount of \$10,000.

For individual artists, MAAF provides support for the distribution and exhibition of works in all genres of time-based and moving image media, including emergent technology. Grant awards assist artists in making recently completed works available to public audiences, and advance artistic exploration and public engagement in the media arts. Grant awards assist artists in meeting expenses including, but not limited to: duplication of preview, screening, and exhibition copies; promotional materials including documentation and schematics of media-installation and new-media works. Other distribution/exhibition requests will be considered on a case-by-case basis. Applicants are encouraged to contact Wave Farm's Media Arts Grants program (MAG) mag@wavefarm.org prior to submitting an application to confirm eligibility.

More information at <https://wavefarm.org/mag/artists>



Applications now being accepted for **WAVE FARM ARTIST RESIDENCIES IN 2017**

Submission Deadline for Individual Artists: February 1, 2017

The **Wave Farm Residency Program** provides artists with a valuable opportunity to concentrate on new transmission works and conduct research about the genre using the Wave Farm Study Center resource library. Transmission Art encompasses work in participatory live art or time-based art such as radio, video, light, installation, and performance, as well as a multiplicity of other practices and media, informed by an intentional use of space (often the airwaves). In conjunction with their residencies, artists perform, are interviewed, and create playlists for broadcast on Wave Farm's WGXC 90.7-FM, a creative community radio station serving over 78,000 potential listeners in New York's Upper Hudson Valley, and international listeners online. Residents receive a \$700 stipend.

More information at: <https://wavefarm.org/ta/residencies>

LISTEN NOW 

Special Broadcasts Ahead on **WAVE FARM RADIO and WGXC 90.7-FM**

New Ear Festival 2017 January 8 - 15, 2017

Wave Farm is delighted to present a live webstream on Wave Farm Radio, with subsequent FM broadcasts on WGXC 90.7-FM, of the New Ear Festival 2017. Curated by Peter Evans, the festival will take place January 8 - 15, 2017 at the Fridman Gallery in New York City. Ticket information is available <http://www.fridmangallery.com/bookstore>. Festival Schedule:

Sun. Jan 8 - Tribute to Pauline Oliveros and launch of 9 Evenings + 50 video archive

Mon. Jan 9 - Amir ElSaffar

Tues. Jan 10 - Kassa Overall

Wed. Jan 11 - Ohal Grietzer, Victoria Keddie

Thurs. Jan 12 - Miya Masaoka, Byron Westbrook

Fri. Jan 13 - Tomeka Reid, Jaimie Branch, Selina Trepp

Sat. Jan 14 - Diego Espinosa

Sun. Jan 15 - Levy Lorenzo, Lea Bertucci

[More info](#)

Guest DJ: 500 TaBLEaux January 13, 2017, 7 p.m.

Live broadcast on WGXC 90.7-FM and Wave Farm Radio from HiLo in Catskill, NY. Book release party for 500 TaBLEauX. Featuring performance, sounds and objects by Maximilian Goldfarb, Jonas Bers, Crazyed, Brian Dewan, and Publication Studio. Free event. Cash Bar. **[More info](#)**

Art's Birthday January 17, 2017, Midnight

Celebrating Art's Birthday is a tradition started by French Fluxus artist Robert Filliou who declared, on January 17, 1963 that art had been born exactly one million years ago when somebody dropped a dry sponge into a bucket of water. Tune in to celebrate Art's Birthday on WGXC 90.7-FM and Wave Farm Radio for a special Radio Stew broadcast. Radio Stew airs daily at midnight and features radio art, radio theatre, experiments, live show, anything goes on this nightly/early morning hour of radio. These shows are often live, and sometimes are hosted by the artists-in-residence at Wave Farm. **[More info](#)**

Inauguration Protests Coverage January 20, 2017

Coverage of the Women's March on Washington, and other protests surrounding the inauguration of the new president. WGXC and Wave Farm Radio will cut to live feeds of the protests during a special Weather Radio broadcast from 10:00 a.m. - 10:30 a.m. and throughout the day.

WGXC 90.7-FM

Community Programming Sunday-Friday (6 a.m.-midnight.)

Transmission Arts/Experimental Sound: Saturday + overnights (midnight-6 a.m.)

Wave Farm Radio

Transmission Arts/Experimental Sound: around the clock



Share



Tweet



Forward

Wave Farm is a non-profit arts organization driven by experimentation with broadcast media and the airwaves. Our programs—[Transmission Arts](#), [WGXC-FM](#), and [Media Arts Grants](#)—provide access to transmission technologies and support artists and organizations that engage with media as an art form.


Copyright © 2018 Wave Farm, All rights reserved.

Click the "update subscription preferences" below to control how many messages you receive from us each year, and to restrict contact to a specific program of activity. Thank you!

Our mailing address is:

Wave Farm
5662 Route 23
Acra, NY 12405

[Add us to your address book](#)

Wave Farm on Facebook 
[unsubscribe from this list](#) [update subscription preferences](#)