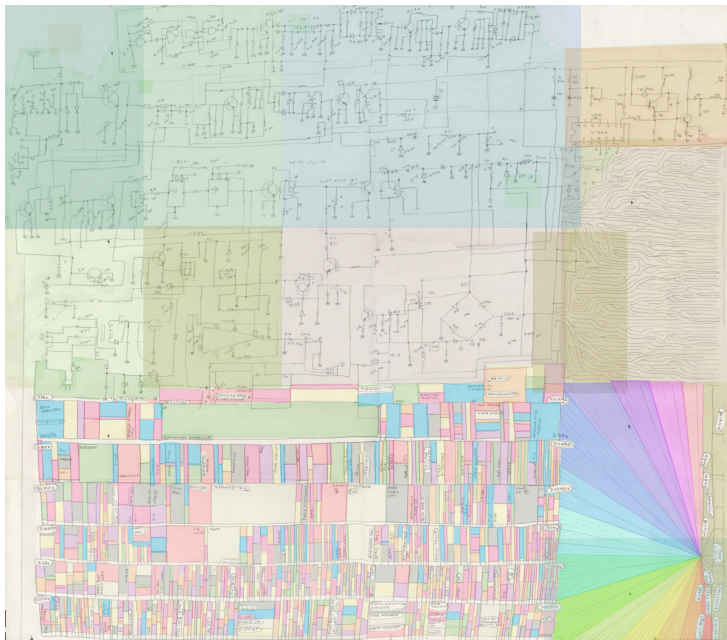


[View this email in your browser](#)

Schedule Announced for Wave Farm 1997-2017 @ Fridman Gallery NYC Oct 21. Wave Farm at MAD's "Sonic Arcade" Sept - Feb. New MAAF Guidelines for Artists and the next Organization Deadlines is Oct 1.



Wave Farm 1997-2017: Twenty Performances for Twenty Years

Oct 21, 2017: 12 p.m. - 10 p.m.
\$10 - \$20 sliding scale
Fridman Gallery 287 Spring Street New York, NY 10013

This durational celebration features live performances by 20 co-conspirators and collaborators who represent the span of Wave Farm, from its earliest days as the free103point9 artist collective through to the present day.

Participating artists include: 31 Down, Ed Bear, Lea Bertucci, Olivia Bradley-Skill, Damian Catera, Corcorax, Brian Dewan, Anna Friz, Michael Garofalo, Howardian, Tianna Kennedy, Jeff Kolar, C Lavender, LoVid, Angel Nevarez & Valerie Tevere, Laura Ortman, Stick Sellers,

SEPTEMBER 2017

Wave Farm 1997-2017 at Fridman Gallery 10/21: Schedule Announced!

GO

Radio at the Museum of Arts and Design's "Sonic Arcade" Sept 2017 - Feb 2018.

GO

Media Arts Assistance Fund for Organizations next deadline is 10/1.

GO

New Guidelines for Media Arts Assistance Fund for Artists

GO



MAAF Technical Assistance for

Melissa Weaver, Gregory Whitehead, and Bryan Zimmerman.

Audiences are invited to turn out in person at the **Fridman Gallery** in NYC, or tune in live on Wave Farm Radio at wavefarm.org/listen and **WGXC 90.7-FM** in the Upper Hudson Valley, New York. Limited edition event poster (pictured above) by Maximilian Goldfarb.

Schedule:

12:00 p.m. Video by Melissa Weaver and Brian Dewan
12:30 p.m. Laura Ortman
01:00 p.m. Ed Bear
01:30 p.m. Angel Nevarez & Valerie Tevere
02:00 p.m. Michael Garofalo
02:30 p.m. Lea Bertucci
03:00 p.m. Olivia Bradley-Skill
03:30 p.m. Corcorax
04:00 p.m. C. Lavender
04:30 p.m. Tianna Kennedy
05:00 p.m. Jeff Kolar
05:30 p.m. Gregory Whitehead
06:00 p.m. Anna Friz
06:30 p.m. Brian Dewan
07:00 p.m. LoVid
07:30 p.m. Bryan Zimmerman
08:00 p.m. 31 Down
08:30 p.m. Stick Sellers
09:00 p.m. Damian Catera
09:30 p.m. Howardian



Sonic Arcade: Shaping Space

Organizations

Next Deadline is October 1, 2017

The New York State Council on the Arts in Partnership with Wave Farm: Media Arts Assistance Fund (MAAF) provides funds to hire outside consultants to support organizational and professional development, as well as convening and conference attendance. **Eligible organizations have missions specific to the media arts, and dedicate the majority of their programming to technology as an art form. Applications from multi-disciplinary organizations will be considered on a case-by-case basis, but are not a MAAF priority.** Organizations may request funding support up to a maximum amount of \$4,000. Full details available at wavefarm.org/mag/organizations.

MAAF Distribution Support for Individual Artists: 2018 Guidelines Now Available

Next Deadline is January 15, 2018

Grant awards assist artists in making recently completed media artworks available to public audiences. Please note that the guidelines for this grant have changed substantially for the 2018 cycle and are available for review at:

wavefarm.org/mag/artists.

with Sound

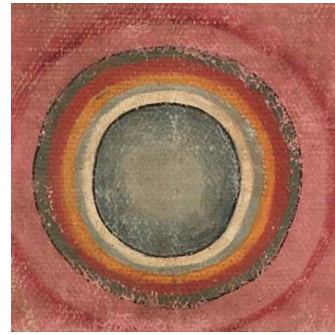
Sept 14, 2017 - Feb 25, 2018. The Museum of Arts and Design 2 Columbus Circle, New York, NY 10019

Wave Farm is pleased to partner with Radius and the *Sonic Arcade* exhibition on view at the Museum of Arts and Design in New York. On the fourth Saturday of the month September 2017 through February 2018, museum visitors will experience a microradio broadcast of Wave Farm's WGXC 90.7-FM programming via radios available at the exhibition.

Sonic Arcade: Shaping Space with Sound is a multi-component exhibition featuring interactive installations, immersive environments, and performing objects that explore how the ephemeral and abstract nature of sound is made material. At a time when so much visual information is being dispatched, consumed, and digested, the auditory provides a compelling sensory experience that is capable of reorienting the body to consider spatial and interpersonal relationships anew.

Comprised of linked solo and curated projects, *Sonic Arcade* explores sound as substance, framing it as interdependent material that is physically crafted and transmitted through electronic circuits and signals, radio waves, and resonant bodies that create encounters that are not only heard, but felt. The exhibition features contemporary artists, designers, and performers who respond to sound's potential as a material that influences how people experience space, their environment, and time, drawing out the ability of the auditory to provide a fresh perspective on how surroundings, and the body, are perceived and engaged.

Sonic Arcade features solo projects by Arjen Noordeman and Christie Wright, Louise Foo and Martha Skou, MSHR, Julianne Swartz, Naama Tsabar, and Studio PSK, whose project incorporates on-site residency and activation by New York-based choreographers. In addition, *Sonic Arcade* includes two nested exhibitions: the first, curated by Robert Aiki Aubrey Lowe, features commissions by Emily Counts and Make Noise; the second, curated by Radius, comprises off-site, site-specific commissions by Deborah Stratman and Anna Friz.



FROM OUR PARTNERS

The World Is Sound

Listening Challenge

The Rubin Museum of Art

"We're surrounded by sounds, but do we understand how they shape our consciousness?"

Are we really listening to the soundscapes of our lives, or screening them out without even realizing it?

Can understanding the impact of sound lead us to transform ourselves? Our society?

We're bringing you a week of experiential challenges, delivered to your inbox, which explore these questions and provide daily activities to acquire new sound skills. You'll learn to listen with your whole body with advice and activities shaped by sound experts, artists, musicians, and other leaders in the field.

Each challenge is simple (most take around 15 minutes or less) and designed to bring you a specific benefit. You'll activate unconscious perceptions, focus your attention, exercise your empathy muscles, and discover new connections.

Sign up now, and we'll send

you the first challenge on
September 17! " - **The Rubin**

Wave Farm is a non-profit arts organization driven by experimentation with broadcast media and the airwaves. Our programs—**Transmission Arts**, **WGXC-FM**, and **Media Arts Grants**—provide access to transmission technologies and support artists and organizations that engage with media as an art form.

Wave Farm programs are made possible, in part, by the New York State Council on the Arts with the support of Governor Andrew Cuomo and the New York State Legislature; the National Endowment for the Arts; The Andy Warhol Foundation for the Visual Arts; the Greene County Legislature through the County Initiative Program, administered in Greene County by the Greene County Council on the Arts; the Alexander and Marjorie Hover Foundation; the Foundation for Contemporary Arts; the T. Backer Fund; the Joseph Family Charitable Trust; and hundreds of other generous individual donors.



**Council on
the Arts**



**National
Endowment
for the Arts**
arts.gov



Copyright © 2018 Wave Farm, All rights reserved.

Click the "update subscription preferences" below to control how many messages you receive from us each year, and to restrict contact to a specific program of activity. Thank you!

Our mailing address is:

Wave Farm
5662 Route 23
Acra, NY 12405

Add us to your address book

Want to change how you receive these emails?

You can **update your preferences** or **unsubscribe from this list**.