

View this email in your browser

Wave Farm welcomes resident artists DinahBird and Jean-Philippe Renoult, followed by Mollye Bendell this month. Calling all Record Fair Vendors to the 2018 WGXC Record Fair at Basilica Hudson. And, WGXC's Radio Everywhere Pledge Drive.



TRANSMISSION
ARTS



WGXC
90.7-FM



MEDIA ARTS
GRANTS



DinahBird and Jean-Philippe Renoult

In-residence: May 30 - June 13, 2018

Live Broadcast WGXC 90.7-FM, or wavefarm.org/listen

Saturday Afternoon Show, June 9, 2018, 4 - 6 p.m.

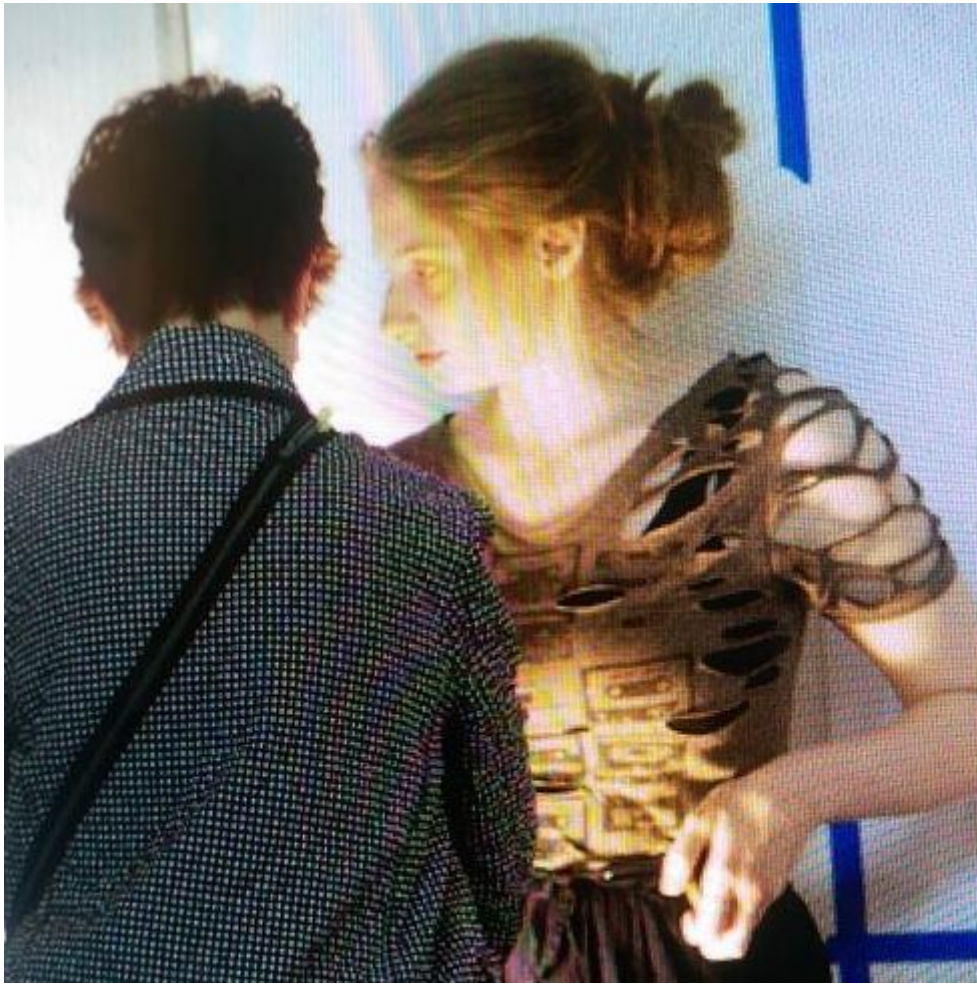
Radio Stew, June 11, 2018, 12:05 - 1 a.m.

"Tuning the World" is a series of outdoor broadcasts, an active approach to field recording and listening where live sonic drones are transmitted back into the soundscape. Performed outdoors on the Wave Farm Saturday Afternoon Show (June

9, 2018, 4 - 6 p.m.), Jean-Philippe will play his shruti box, a Northern Indian portable instrument, cousin to the harmonium, while Dinah "actively" records the process, moving back and forth between the environmental sounds such as water, wind, and birds, and the transmitted sound. Dinah will also create a feedback loop of single notes and tuneless human hums, inspired by the local electromagnetic environment using Wave Farm's site-specific 1620-AM transmitter. The following night, just after midnight, as Sunday becomes Monday morning, Dinah and Jean-Philippe will re-locate inside the Acra studio for an hour of nocturnal contemplation and noise on Radio Stew (June 11, 2018, 12:05 - 1 a.m.).

Inspired by the ideas and methods of R. Murray Schafer, his theories on soundscape, and his concept of "wilderness radio," where the "uneventful events of the natural soundscape transmitted without editing into the hearts of cities" (Radical Radio -1987) as well as Pauline Oliveros' practice of Deep Listening, DinahBird and Jean-Philippe have developed their own "active" listening and recording posture in order to play with the surrounding natural landscape, softly and quietly, and at varying distances from the microphones that document their actions.

DinahBird and Jean-Philippe are sound and radio artists based in Paris. Both their solo and joint practices question the notion of diffusion, transmission and memory and are highly responsive to place. Their work includes sound pieces, installations, broadcasts, performances and publications and is often inspired by early transmission technologies and archives. Their current interests include, electromagnetic hums, old weather, loops, drones, and high frequency trading. <http://bird-renoult.net>



Mollye Bendell

In-residence: June 15 - 24, 2018

Live Broadcast: Saturday, June 23, 4 - 6 p.m. WGXC 90.7-FM, or wavefarm.org/listen

In "Whethervanes" Bendell continues a practice in antenna design, delving farther into the physical side of electronic media, building her own circuits in a playful meditation on the physics of the signal. "Whethervanes" consists of a series of experimental radios in which components such as the tuner and antennae are subject to the wind. Found and constructed objects including weathervanes, flags, sails, and windmills are used to manipulate different kinds of potentiometers and different antenna configurations. Bendell's specialized and sculpted radio devices mount to roofs, stake into gardens, and observe the tides from piers. "Whethervanes" illustrate the physical nature of electronic media in conversation with a force of nature.

Mollye Bendell makes digital and analog sculptures to connect with digital and analog worlds. She seeks to create the space between physical beings, to build a practice around intangibility and to meditate on the contradiction of the act of making in the absence of the object. Her work uses the ephemeral nature of electronic media as a metaphor for exploring vulnerability, visibility, and longing in a world that can feel isolating.

Mollye Bendell makes digital and analog sculptures to connect with digital and analog worlds. She seeks to create the space between physical beings, to build a practice around intangibility and to meditate on the contradiction of the act of making in the absence of the object. Her work uses the ephemeral nature of electronic media as a metaphor for exploring vulnerability, visibility, and longing in a world that can feel isolating. <https://mollyebendell.com/>



WGXC's Radio Everywhere! Pledge Drive

Help Wave Farm's **WGXC 90.7-FM** raise the funds imperative to keeping this creative community radio station alive and well. Your tax-deductible donations make this audaciously local and experimental radio project possible.

DONATE NOW

A MANIFESTO FOR PARTICIPATORY RADIO

WGXC believes in: Community

We are a hands-on participatory radio station, and serve many communities. WGXC's volunteer programmers range in age from nine to 84, and come from all walks of life; what they produce is as varied as the communities we serve. WGXC is an unbiased source for local news and cultural affairs information. Programming made by and for youth airs daily, and our celebrated music programming is unique, diverse, and eclectic.

WGXC believes in: Creative use of the airwaves



Calling all Vendors!

Wave Farm's WGXC 90.7-FM presents the WGXC Record Fair 2018 in partnership with Basilica Hudson. Vendors from across the northeast gather in Basilica's Main Hall to sell vinyl, CDs, cassette tapes, DVDs, plus books, musical equipment and instruments, and radio-related ephemera. The plentiful WGXC tables are a digger's dream, with a variety of affordably priced records in all genres.

The WGXC Record Fair coincides with Basilica SoundScape (Sept 14-16), an immersive, innovative weekend of art, music, and culture, which draws an audience in the thousands. Conceptual sound performances, author readings, installations, collaborations, curated local vendors and artisans, and on-site activities. Info at basilicahudson.org/soundscape.

VENDOR INFORMATION

Vendors can book up to three 6' tables to sell records, CDs, tapes, radios, books, radios, electronics, music equipment and more. A single table is \$55. Two or more tables are \$50 each. Table fees benefit WGXC 90.7-FM.

Read more.

WGXC is a program division of the non-profit arts organization Wave Farm based in Acra, NY. We are the only station in the country to dedicate significant airtime to radio as an artistic medium. Tune into transmission art and experimental sound programming overnight and on Saturdays, and hear artists from all over the world who sculpt and compose with the airwaves.

WGXC believes in: Hands-on, two-way radio

We provide public access to the airwaves, giving individuals and organizations the means to tell their own stories. WGXC listeners make radio, participate in on-air conversations, record public meetings for broadcast, contribute content, host their own shows, and more. The G and the C stand for Greene and Columbia counties in New York. WGXC is listener-supported, and we serve 78,000 potential local listeners in the Upper Hudson Valley, in addition to listeners from across the globe online. Our programs can be uplifting, surprising; are very often experimental, and almost always entertaining. Program applications are accepted year-round, and no prior radio experience is required.



Wave Farm programs are made possible, in part, by the New York State Council on the Arts with the support of Governor Andrew Cuomo and the New York State Legislature; the National Endowment for the Arts; The Andy Warhol Foundation for the Visual Arts; the Greene County Legislature through the County Initiative Program, administered in Greene County by the Greene County Council on the Arts; the Alexander and Marjorie Hover Foundation; the Foundation for Contemporary Arts; the T. Backer Fund; the Joseph Family Charitable Trust; and hundreds of other generous individual donors.



**Council on
the Arts**



**National
Endowment
for the Arts**
arts.gov

Copyright © 2018 Wave Farm, All rights reserved.

Click the "update subscription preferences" below to control how many messages you receive from us each year, and to restrict contact to a specific program of activity. Thank you!

Our mailing address is:

Wave Farm
5662 Route 23
Acra, NY 12405

Add us to your address book

Want to change how you receive these emails?
You can **update your preferences** or **unsubscribe from this list**.